



Meta Remodeling Awards 2019

A Remodeling Awards Program

Sponsored by

NARI of Silicon Valley

RESIDENTIAL INTERIOR

\$250,001 TO \$500,000

Project Description:

The existing kitchen was dark, narrow, and cut off from the rest of the house. Dated cabinets were lacking in storage, and countertops were inadequate. By removing a 16-foot long wall, the space opened up to the adjacent family room, allowing space for a large island facing the TV. Removing the entry closet improves traffic flow and feels less confined. The couple required principles of Universal Design as they age in place, deal with some health issues, and plan for possible wheelchair use in the future. Now the cook can enjoy meal preparation with his grandkids in the family room.



This stunning kitchen with vivid colors and shimmering surfaces is not just another pretty face. It has plenty of storage and functions well as a cook's kitchen. The homeowners are thrilled with the updated space and open plan linking it to the family room.

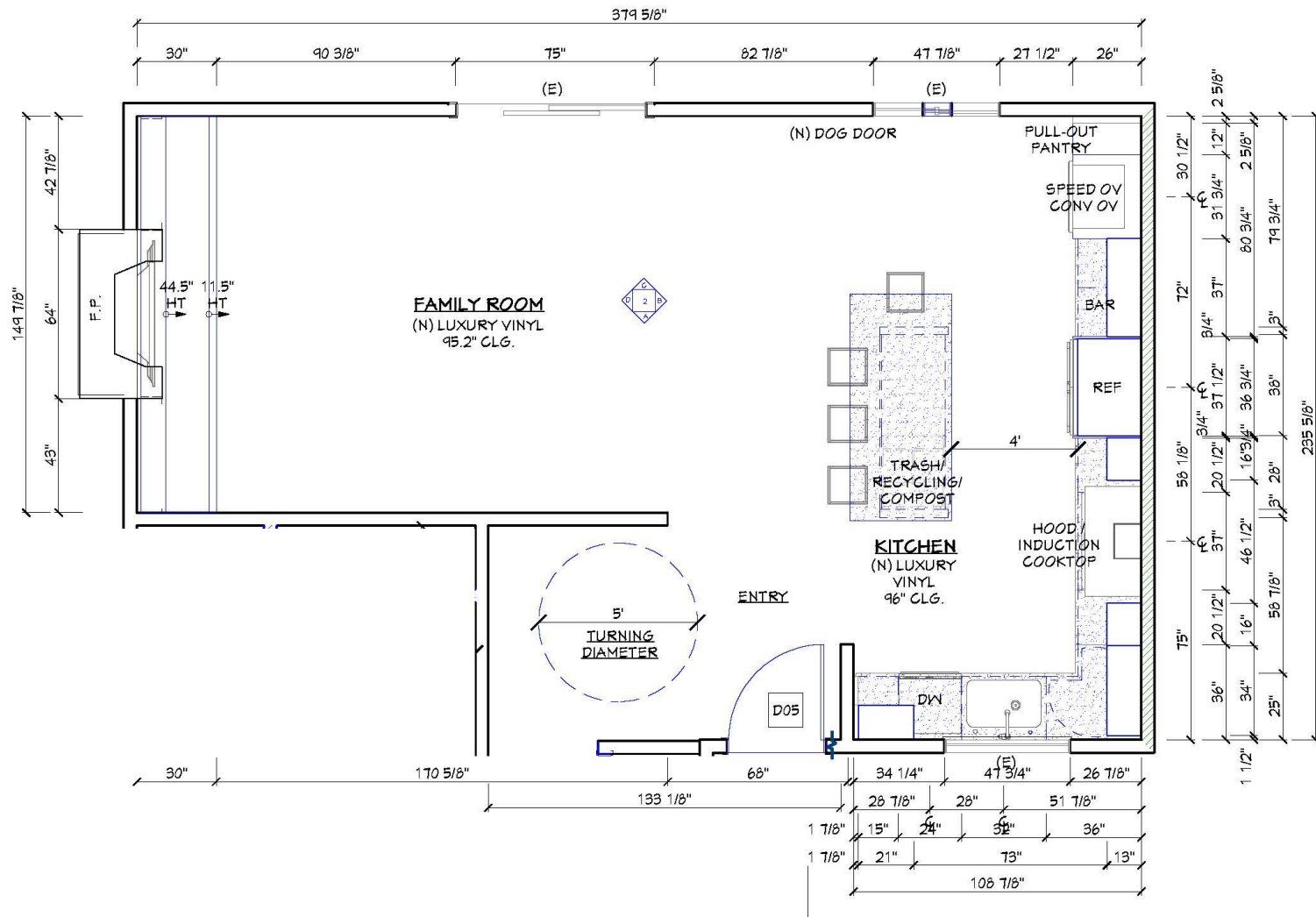
DESIGN STATEMENT- RESIDENTIAL INTERIOR \$250,001 – \$500,000

OBJECTIVES:

- Open up cramped, dark and narrow kitchen as well as the entry area to the family room.
- Create a more functional kitchen space with maximum storage and counter space.
- The husband who is the cook, did not want to feel isolated from the rest of the family and grandkids during meal prep.
- Add an island for plenty of room for meal preparation, as a place to gather around, and as an informal area to eat.
- Keep Universal Design in mind for aging in place. Wife's health issues presented the possibility of needing a wheelchair in the future.
- Ugly painted brick fireplace and bookshelves needed updating.
- Clients love bold color and lots of sparkle.

DESIGN SOLUTIONS AND SPECIAL FEATURES:

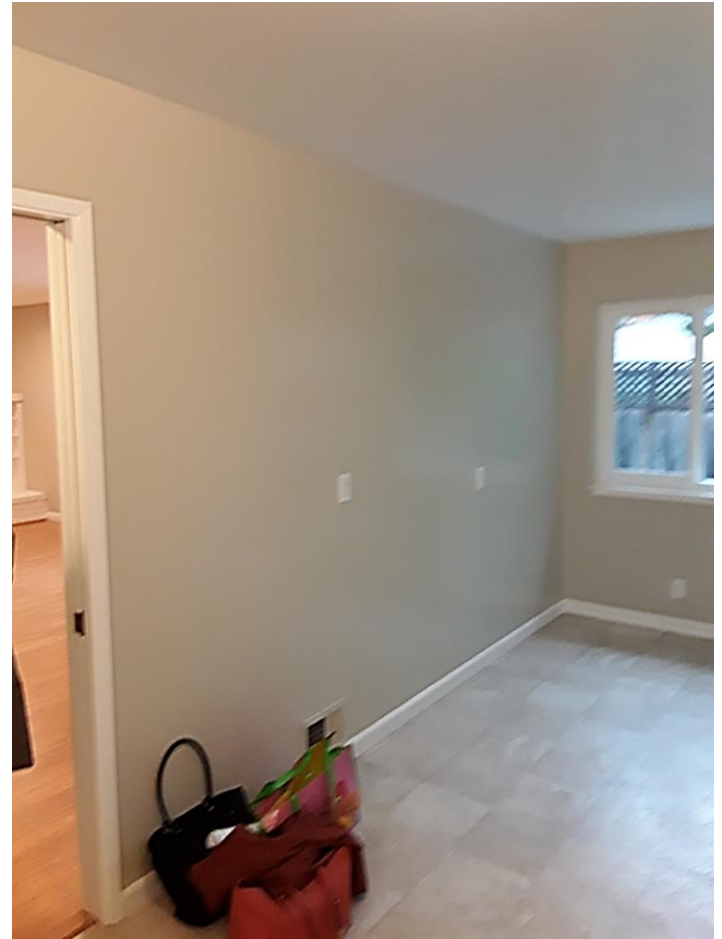
- Enlarge the space by removing the long dividing wall between the narrow, dark kitchen and the living room.
- This load bearing wall spanned 16 feet, but we were able to fit a glulam in the attic for a seamless ceiling between kitchen and family room.
- A new 7-foot long island provides ample prep area, storage, a trash/recycling/compost center, and is large enough to seat 4 people.
- Replacing back door with a doggie door creates more wall space for cabinetry and appliances to extend down the entire wall. Without the long dividing wall, the existing patio door serves as an easily accessible backyard access.
- At over 4 feet wide, the pathway between the island and perimeter cabinets provide plenty of space for a wheelchair to maneuver if needed.
- A new sun tunnel over the island provides natural light, and layers of electrical lighting put the control of lighting scenarios in the homeowner's hands. The 5" LED cans, under-cabinet LED strip lights, and pendants at sink and island provide ample illumination for meal prep.
- Bar area has pull-out drawer with vertical cubbies to store liquor bottles upright, and a dark wood counter adds textural interest.
- White cabinets serve as a canvas for the vivid colors in the backsplash, paint, and pendants.
- The dimensional wavy aqua colored glass backsplash tile has glass "ribbon" liners adding a bit of visual interest. Glitter grout and counters with metallic bits provide the bling that the wife loves.
- The Graphite Matte island cabinet finish serves to ground the bright colors of the finishes.
- Luxury vinyl plank floors are sturdy and will hold up to heavy traffic from three dogs and twin grandkids. It is a more forgiving surface to stand on for long periods of time than porcelain, and the variation in its colors helps to hide shedding from the dogs.
- Removing the closet at the entry opens up the space for better flow and expanded views. It also provides easier maneuverability to bedroom hallway in case of wheelchair use.
- Concrete layered over existing brick fireplace and hearth updates the look with a more contemporary vibe. Floating shelves on deep teal graphic wallpaper displays an eclectic collection of objects. Bookshelves got replaced with new Graphite Matte cabinets to match the island cabinets.
- Interior doors painted to match Graphite Matte island cabinet finish.



PROPOSED FLOORPLAN: KITCHEN & FAMILY ROOM

PROPOSED FLOOR PLAN AFTER:

By removing the 16-foot wall dividing the kitchen from the family room, the space was opened up and a generous island allows the entire family to be together during meal prep. Eliminating the back yard door enabled us to extend cabinets along the entire wall, including a large pull-out pantry cabinet, and a bar. The addition of a sun tunnel over the island brings natural light over the main work station.



BEFORE:

Minimal counter space for prep, dated plywood painted cabinets, and a dark narrow confined kitchen felt cramped and isolated. With the cooktop immediately next to the refrigerator, there was no landing area, which left an unsafe and inconvenient layout. Poor lighting, little storage, and a “blah” neutral palette felt depressing to the homeowners.



AFTER:

Removing the wall to the living room opens up the space for large island. A sun tunnel provides natural lighting along with matching pendants over the island and sink, undercabinet task lighting, and 5" recessed LED cans for general lighting.



BEFORE:

The entry had an “off the rack” raised panel door, and the closet was impeding the flow to the hallway. This would become an obstacle if the homeowner needs a wheelchair in the future.



AFTER:

The entry door was replaced with a contemporary door, painted to match the Graphite Matte island cabinets, and with glass lights at just the right height for their 3 dogs to peer out from.

A whimsical chandelier with aqua blown glass ties into the colors of the kitchen back splash tile.

Without the front closet, there is plenty of room for a wheelchair to enter and have space for a turning radius to access the hall to the bedrooms and bathrooms.



BEFORE:

The size differential between wall cabinets surrounding window looks awkward and unbalanced.

Small blind cabinets (both at base and wall cabinets) to the left of the sink had tiny openings, making access impossible even though they had interior open space.



AFTER:

By running the wall cabinet straight to the wall to the left of the sink, the space around the window is now symmetrical, and feels more open.

There is actually more usable space in the wall cabinets *without* the blind corner.



AFTER:

The sleek induction cooktop is safe to use, easy to clean, and better for the environment. The wavy glass tile backsplash with glass ribbon liners and glitter grout rises behind the hood to the ceiling for maximum impact. Flecks of metallic pieces in the quartz counters add shimmer to the light, bright space.



BEFORE:

The door to the back yard was inconvenient to access with breakfast table in front of it. The door swing prevented more cabinet storage from going in front of it.



AFTER:

A large 7- foot long island offers ample counter space for meal preparation, seating for 4 people, and pull-out trash with recycling and compost bin for easy clean-up.

Removing the back door and placing a dog door underneath the window allows additional cabinets, counter space, and a tall pull-out pantry for plentiful storage.



AFTER:

The bar cabinetry provides a wood counter top, pull-out bottle storage drawer (left side), standard roll-out shelves (right side), with both cabinet pulls placed horizontally to keep the symmetry. A tall pull-out pantry offers lots of additional storage.



BEFORE:

Painted brick fireplace and hearth looked dated. The wood paneling had also been painted white along with the plywood bookshelves.

Homeowners wanted to put a TV above the fireplace mantel, but it was too high to comfortably watch TV without hurting one's neck.



AFTER:

View from the kitchen to the family room:

The chef can see the TV hung over fireplace during meal prep. Bookcases feature woven wire door fronts (for AV control). By removing the top 3 rows of brick and applying multiple layers of concrete, the new area gets a contemporary update. Lowering the fireplace surround puts the TV at a more comfortable level for viewing. Deep teal paint color in the kitchen matches the skeleton wallpaper hung behind floating shelves.

Product	Manufacturer	Reason It Was Chosen
Pendant lights	Melrose II 7-1/2" LED free-jack mini pendant V9617 (canopy-Chrome) 41E08 (pendant)	Color, style, LED
Cabinets	Plato: Inovae Proform, Gloss white, Graphite matte.	Quality, style, finish.
Sink	Blanco Precis 27" single bowl 522413 Metallic Gray	Quality, style, finish color.
Faucet	Hansgrohe 39840001, polished chrome	Quality, style, finish.
Garbage Disposal	In-Sink-Erator Evolution compact 78238	Quality, durability.
Waste Disposer trim	Mountain Plumbing MT205/CPB	Quality, style, finish.
Air Switch	Mountain Plumbing MT951/CPB	Quality, style, finish.
Air Gap	Mountain Plumbing MT400U/CPB	Quality, style, finish.
Cabinet Pulls	Top Knobs Channing Cup TK772PC, TK774PC, TK743PC, TK744PC	Quality, style, finish.
Cabinet Handles	Top Knobs Barrington TK742PC, TK742PC	Quality, style, finish.
Pet Door	Maxseal Door mount pet door large 11x16 single flap	Quality, style, size.
Tile – backsplash	American Olean Abstracts 4x12, c108 Fountain Blue	Quality, style, finish color.
Liner Tile	Crossville Color by Numbers ½ x 12 Listello WTL Blue/Aqua	Quality, style, finish color.
Tile edge detail	Schluter Jolly, chrome finish	Quality, style, finish color.
Counter	Silestone White Platinum Quartz	Quality, style, finish color, durability
Cooktop	KitchenAid Induction Cooktop KICU569XSS Stainless Steel	Quality, style, durability
Refrigerator/Freezer	KitchenAid Refrigerator KRFC302ESS Stainless Steel	Quality, style, durability
Oven	KitchenAid Single Electric Oven KOSE500ESS, Stainless Steel	Quality, style, finish
Microwave	KitchenAid Microwave Oven KMBP100ESS Stainless Steel	Quality, style, finish
Dishwasher	Bosch Dishwasher SHP865WD5N Stainless Steel	Quality, style, finish
Hood	Zephyr Anzio Wall Hood ZANM90CS Stainless Steel	Quality, style, finish
Wood Counter	Café Countertops	Quality, style, food safe finish, durability
Trash/ Recycling/Composting	Hafele Euro Cargo 60 Pull-out trash w/ recycling and compost bin.	Quality, style, durability